

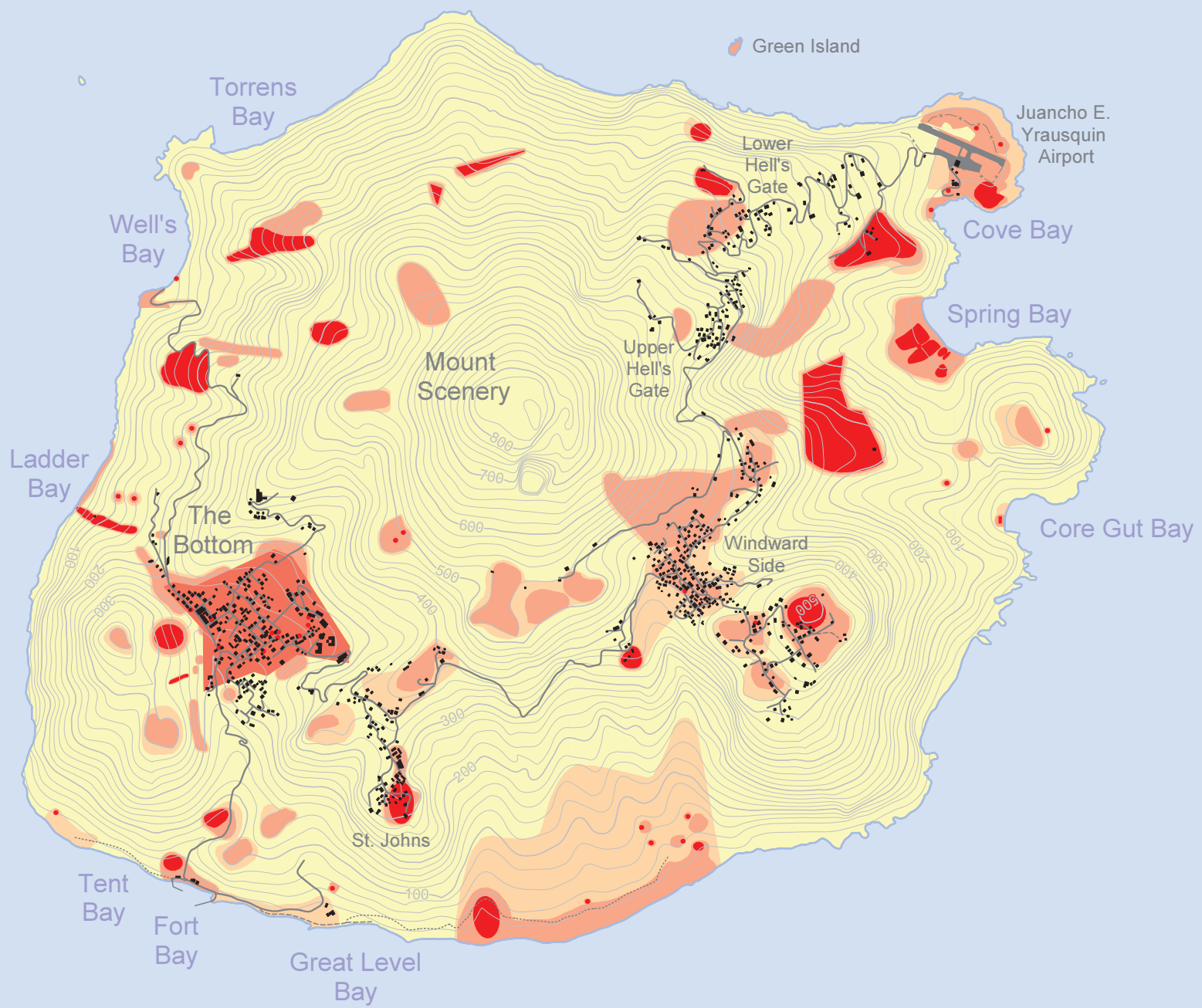
Saba, Caribbean Netherlands Archaeological Predictive Map 1 : 25 000

N



0 0.5 1 km

Caribbean Sea



Caribbean Sea

Legend

- Roads
- - - Tracks
- ⋯ Trails
- · - Fences
- Height contours (interval 20 m)
- Buildings
- Archaeological sites
- Historical city
- High archaeological expectancy
- Medium archaeological expectancy
- Low archaeological expectancy

Produced by:

ARGEOgraph

Supported by: SABARC



Directed by:



Universiteit
Leiden

More information: www.arceograph.nl/project/saba2015

Creative Commons License by ARGEOfgraph, 2015